

STREET TREE MASTER PLAN & PLANT PROFILES



THE
AVENUES
OF
HIGHFIELDS

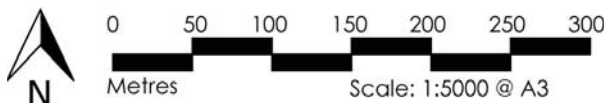


WOLTER
consulting group

Planning Urban Design Landscape Environment Surveying

STREET TREE MASTER PLAN

The selection of tree species has been established in a hierarchical order. With Boulevards being the highest order of street, to major avenues, minor avenues, terraces and local streets being the most minor road type. Tree species have been selected to reinforce and emphasise this hierarchy of street in order to aid in wayfinding but also to establish this development as an iconic landscape with a Toowoomba characteristic.



BOULEVARD



The high order Boulevards are the main entrance roads to and into the development, setting the scene for the entire precinct. Importantly, they are also key roads in the beginning stages of the development. The trees selected for the Boulevards are bold, and present a prestigious image for the entire development. Tree species are selected for their prominence, size, form and colour, which will assist in wayfinding and will present this development as an iconic leafy, tree lined scape, embracing the Toowoomba characteristic.



QUE pal



PRY cal



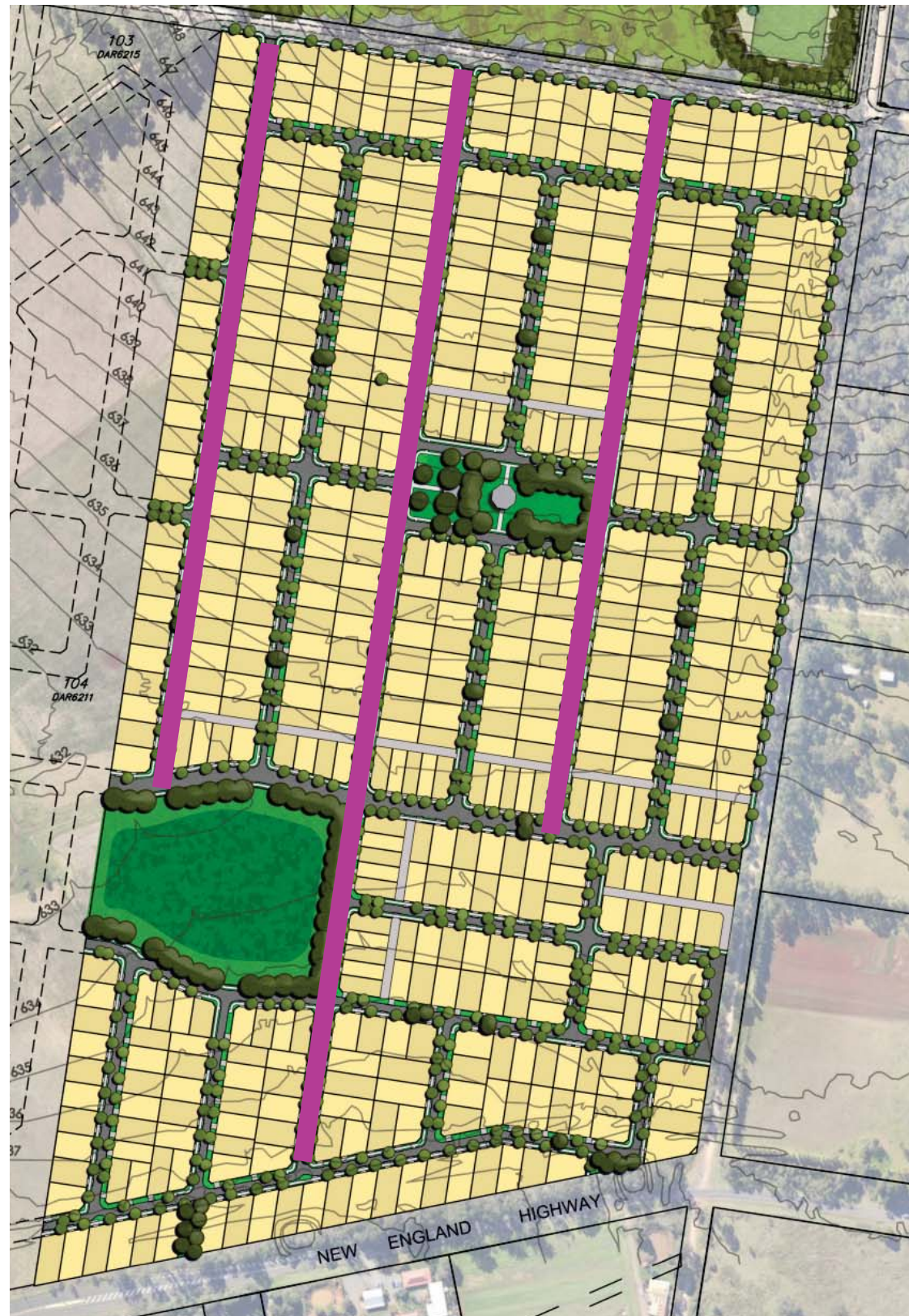
AGA rob

BOULEVARD



0 50 100 150 200 250 300
Metres Scale: 1:5000 @ A3

MAJOR AVENUE



MAJOR AVENUE



0 50 100 150 200 250 300
Metres Scale: 1:5000 @ A3

The Major Avenues are through roads and have a wider road reserve and they also interface with the parks. One reason these trees have been selected is because of their floral displays. The mainly evergreen and flowering nature of these trees will support and highlight the colour of the Avenues deciduous trees as well as provide exceptional colour during the spring and summer months. Grouping the evergreen flowering trees into these Major Avenues will also reinforce wayfinding throughout.



NYS syl



ACE oct



PRY fau



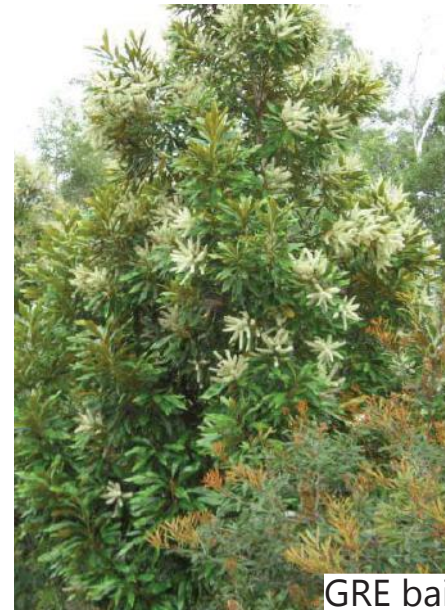
LIR tul

MINOR AVENUE

Minor Avenues have a narrower reserve width and have lower vehicle numbers. This selection of deciduous trees will be a refreshing reflection of seasonal change which is part of the characteristic of Toowoomba. As the third level in the street hierarchy the trees will add a variety of colours and textures to the avenues and act as linkages between the Boulevards. These trees will also act as windows across the entire development.



TRI lau



GRE bai



WAT flo



HYM fla

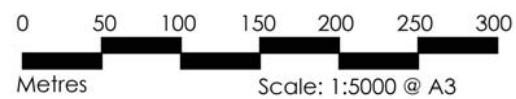


COR fic

MINOR AVENUE

02 Oct 2015 | Issue D | LA3272

The Avenues of Highfields | Street Tree Master Plan



TERRACE

The Terraces are east/west streets that generally have one side of the street lower than the other. They also interact with the Parks. The trees are selected for their smaller sizes, leaf and flower colour to suit the smaller verge widths of these street types. The tree species selection also accentuates the views down the streets terminating at the Parks.



BAC cit



LOP con



PLA ace



LIQ sty

■ TERRACE

0 50 100 150 200 250 300
Metres Scale: 1:5000 @ A3

STREET

Local Streets trees have been selected for their consistent form and predictable growth. These smaller scale streets form a key base of reliability to the plant selection and are a very important part of greening the streets and the development as a whole. These trees will provide a high level of green amenity to the residential development and contribute to the walkable amenity of the development.



MAG gra



BRA pop



BUC cel

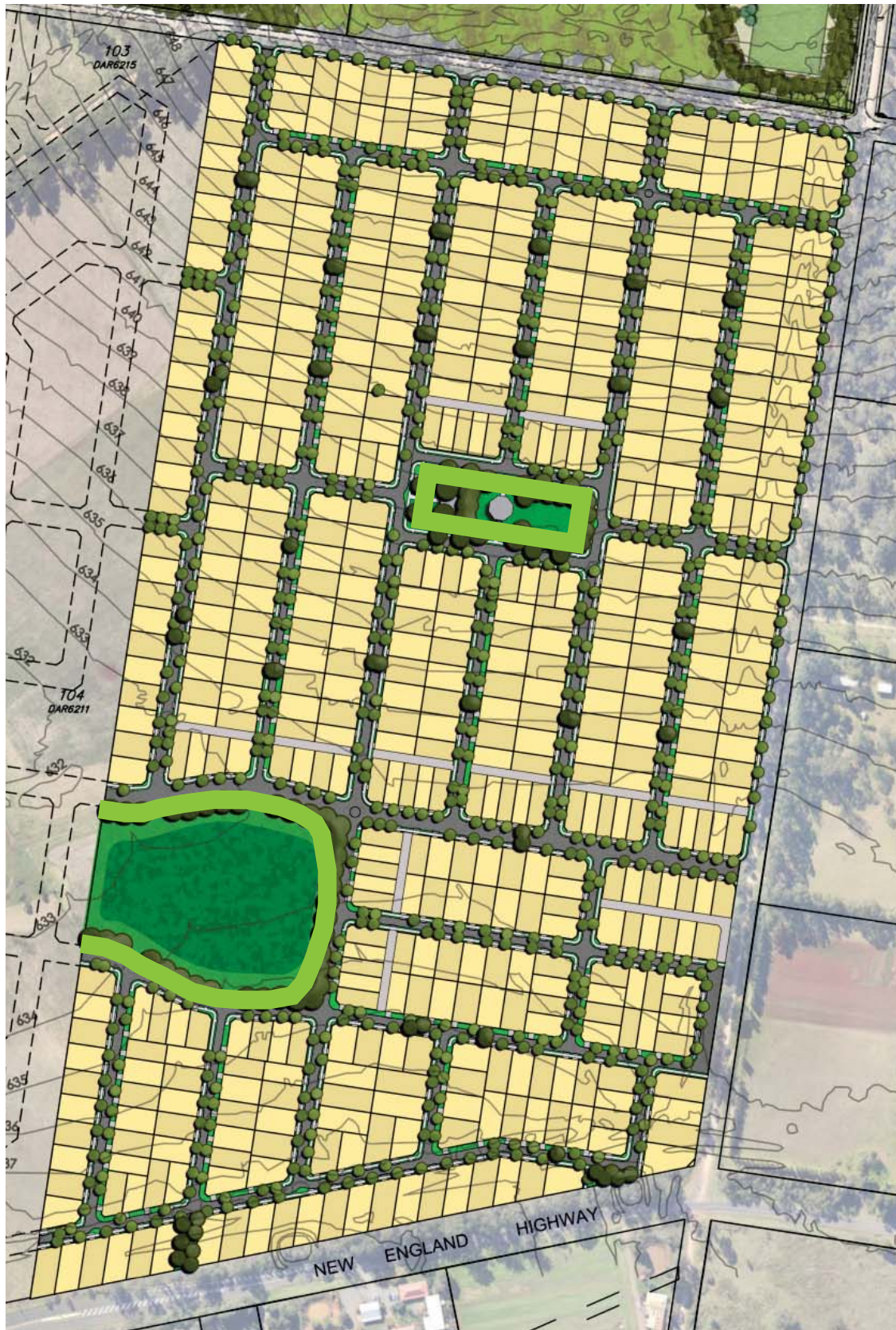
STREET

02 Oct 2015 | Issue D | LA3272

The Avenues of Highfields | Street Tree Master Plan



PARK EDGE



The park edge trees will be carefully selected to reflect the character of Toowoomba parks. They provide an important role in amenities and usability, and encourage resident's use of open spaces. The parks allow for larger tree species to be implemented that can provide shade and a positive experience for the residents. High quality parks and trees are a major focus for this development.



CAL cap



GIN bil



QUE nig

 PARK EDGE

02 Oct 2015 | Issue D | LA3272

The Avenues of Highfields | Street Tree Master Plan



0 50 100 150 200 250 300
Metres Scale: 1:5000 @ A3

PLANT PROFILES

Plant Code	Botanical Name	Common Name	Tree Type	Fruit	Flowers	Frost Tolerant	Drought Tolerant
ACE oct	<i>Acer 'October Glory'</i>	October glory red maple	Deciduous	No	✘	Heavy Frost	Tolerant
AGA rob	<i>Agathis robusta</i>	Kauri Pine	Evergreen	Yes	✘	Heavy Frost	Tolerant
ALL tor	<i>Allocasuarina torulosa</i>	Forest she oak	Evergreen	Yes	✓	Tolerant	Sensitive
ARA cun	<i>Araucaria cunninghamii</i>	Hoop Pine	Evergreen	Yes	✘	Heavy Frost	Tolerant
BAC cit	<i>Backhousia citriodora</i>	Lemon Myrtle	Evergreen	Yes	✓	Tolerant	Tolerant
BRA ace	<i>Brachychiton acerifolius</i>	Illawarra flame tree	Evergreen	No	✓	Heavy Frost	Resistant
BRA pop	<i>Brachychiton populneus</i>	Black kurrajong tree	Evergreen	Yes	✓	Tolerant	Tolerant
BUC cel	<i>Buckinghamia celsissima</i>	Ivory curl tree	Evergreen	Yes	✓	Medium	Medium
CAL cap	<i>Calodendrum capense</i>	Cape Chestnut	Evergreen	Yes	✓	Tolerant	Tolerant
COR fic	<i>Corymbia ficifolia</i>	Red flowering gum	Evergreen	No	✓	Light Frost	Highly Tolerant
EUC ter	<i>Eucalyptus tereticornis</i>	Forest Red Gum	Evergreen	Yes	✓	Tolerates frosts	Sensitive
FIC ben	<i>Ficus benjamina</i>	Weeping Fig	Evergreen	Yes	✓	Poor Tolerance	Tolerant
GIN bil	<i>Ginkgo biloba</i>	Ginkgo	Deciduous	Yes	✘	Hardy	Tolerant once established
GRE bai	<i>Grevillea baileyana</i>	White silky oak	Evergreen	No	✓	Sensitive	Sensitive
HYM fla	<i>Hymenosporum flavum</i>	Native frangipani	Evergreen	Yes	✓	Sensitive	Sensitive
LIV aus	<i>Livistona australis</i>	Cabbage palm	Evergreen	Yes	✓	Tolerant	Tolerant
LIR tul	<i>Liriodendron tulipefera</i>	Tulipwood	Deciduous	Yes	✓	Tolerant	No
LIQ sty	<i>Liquidambar styraciflur</i>	Liquid Amba	Deciduous	No	✘	Tolerant	Tolerant
LOP con	<i>Lophostemon confertus</i>	Brush box	Evergreen	No	✓	Low/Light	Resistant
MAG gra	<i>Magnolia grandifolia</i>	Bull bay magnolia	Evergreen	No	✓	Light Frost	Tolerant
MAG vir	<i>Magnolia virginiana</i>	Magnolia	Deciduous	Yes	✓	Tolerant	Tolerant
NYS syl	<i>Nyssa sylvatica</i>	Tupelo	Deciduous	Yes	✓	Tolerant	No
PLA ace	<i>Platanus x acerifolia</i>	London Plane Tree	Deciduous	Yes	✓	Forst Hardy	Tolerant
PHO dac	<i>Phoenix dactylifera</i>	Date Palm	Evergreen	Yes	✓	Tolerant	Tolerant
PRU bil	<i>Prunus bilireana</i>	Flowering peach	Deciduous	No	✓	Tolerant	Tolerant
PRY cal	<i>Pryus calleryana 'Bradford'</i>	Pyrus cultivar	Evergreen	No	✓	Tolerant	Tolerant
PYR fau	<i>Pyrus x fauriei 'Westwood'</i>	Pear	Deciduous	No	✓	Tolerant	Tolerant
QUE nig	<i>Quercus nigra</i>	Water Oak	Deciduous	Yes	✘	Not frost tender	Tolerant
QUE pal	<i>Quercus palustris</i>	Pin oak	Deciduous	Yes	✓	Tolerant	Moderate
QUE rub	<i>Quercus rubur</i>	English Oak	Deciduous	Yes	✓	Tolerant	Tolerant
SEQ sem	<i>Sequoia sempervirens</i>	California redwood	Evergreen	No	✘	Tolerant	Low
TAX dis	<i>Taxodium distichum</i>	Swamp Cyprus	Deciduous	No	✘	Tolerant	Low
TRI lau	<i>Tristaniopsis laurina</i>	Water gum	Evergreen	Yes	✓	Tolerant	Tolerant once established
ULM par	<i>Ulmus parvifolia</i>	Chinese elm	Evergreen	No	✓	Tolerant	Tolerant
WAT flo	<i>Waterhousea floribunda</i>	Weeping lilly pilly	Evergreen	Yes	✓	Tolerant	Tolerant
ZEL ser	<i>Zelkova serrata</i>	Japanese elm	Deciduous	Yes	✓	Tolerant	Tolerant

- BOULEVARD
- MAJOR AVENUE
- MINOR AVENUE
- TERRACE
- STREET
- PARK EDGE

*Note that light green species are options for internal space of parks.



W O L T E R
consulting group

P 3666 5200

F 3666 5202

A 1 Breakfast Creek Rd Newstead Q 4006

W wolterconsulting.com.au

 Planning  Urban Design  Landscape  Environment  Surveying